

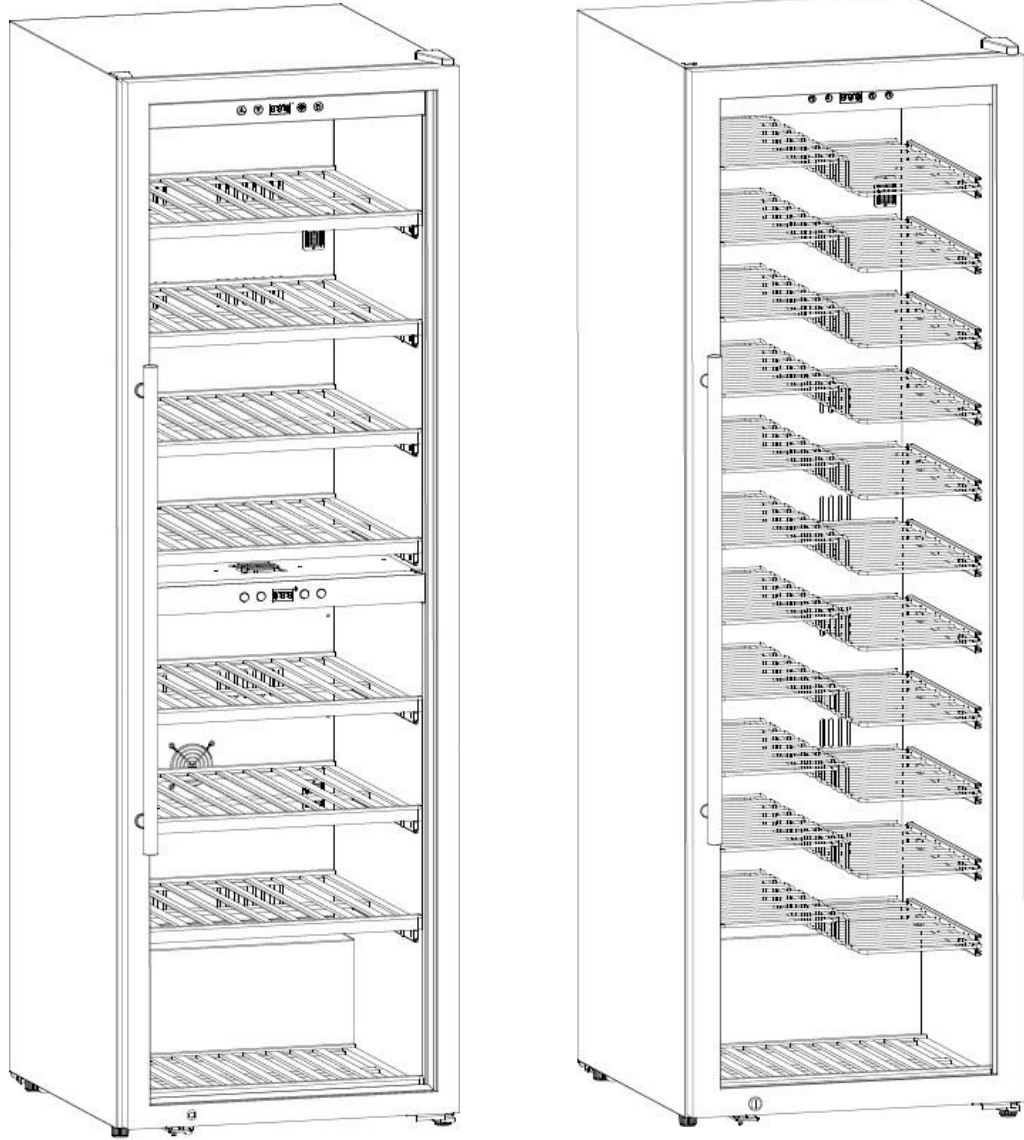


Cave à vins

163 ou 168 bouteilles

CCAV168
CCAV163BZ

User Manual



Contents

1-	Structure_____	9
2-	Important safety instruction -----	10
3-	Wine cabinet installation -----	11
4-	Temperature setting_____	12
5-	Loading and storage of wine bottle -----	14
6-	Installation of handle_____	16
7-	Shelf changing_____	17
8-	Maintenance_____	18
9-	Technical Date_____	18
10-	Trouble shooting_____	19

Explanation

This Instruction Manual is the universal-purpose

version for the model of wine cabinet manufactured by our company.

The appearance of this units that you purchase might be slightly different from the manual, but it does not affect your properly to the specific model you choose, and keep the manual properly so as to facilitate your reference at late time.

This appliance is intended to be used exclusively for the storage of wine.

Matters need attention

Waste disposal tips

Wrappage is used to protect electric appliance during transport and every part of materials are recycled materials.

- Corrugated paperboard/paperboard (made from waste paper)
- Polystyrene block (foam fluoride-free polystyrene)
- Plastic film, bag (polystyrene)
- Packing string (polystyrene)
- Never let child play with packing materials, plastic film may cause suffocation.
- Transport packing materials to public environmental collection depot. Waste cold wine cabinet still has many valuable raw materials and shall be treated separately in residential area not adopting garbage classification.
- Waste cold wine cabinet shall be scraped timely; take off plug, and remove power soft cable. Destroy lock to prevent such situation that a kid is locked by him/herself when playing the lock.



- Before sending the waste cold wine cabinet to public collection depot, cold circulation system shall not be damaged to ensure that the refrigerant and oil of cold wine cabinet suffers no leakage.
- For situations on waste collection date and collection depot, please consult with local environmental sanitation department or government agency.



Warning

- Refrigerant and foam layer is flammable, Pay attention to the fire when maintenance, installation, transportation and handling. Used product need to be recycled by specialized companies, do not arbitrarily discarded.
- It is prohibited to place the machine in a place where is possible to leak corrosive and flammable gas, it is easy to explode or damage the machine.
- The grounding wires cannot be connected with the gas pipe, the water pipe system, the lightning rod and the telephone. If ignore this, it will has the possibility to cause the receiving an electric shock accident.
- Cannot lengthen the power cord without authorization, meanwhile, this appliance couldn't share a socket with other appliance, otherwise, it is easy to cause short circuit or damage the electronic components.
- This product does not contain any spare parts, please do not disassemble. The refrigerant used in this product is combustibile, non-professional maintenance personnel shall not repair the machine, improper repair may be the risk of fire or explosion. If the machine is faulty, please contact the service personnel.
- This appliance is not intended for use by persons (including children) with reduced physical, sensory or mental capabilities, or lack of experience and knowledge, unless they

have been given supervision or instruction concerning use of the appliance by a person responsible for their safety.

- Children should be supervised to ensure that they do not play with the appliance.

- If the supply cord is damaged, it must be replaced by the manufacturer, its service agent or similarly qualified person in order to avoid a hazard

- **WARNING:** Keep ventilation openings, in the appliance enclosure or

in the built-in structure, clear of obstruction.

- **WARNING:** Do not use mechanical devices or other means to accelerate

the defrosting process, other than those recommended by the manufacturer.

- **WARNING:** Do not damage the refrigerant circuit.

- **WARNING:** Do not use electrical appliances inside the food storage compartments of the appliance, unless they are of the type recommended by the manufacturer.

- **WARNING:** When positioning the appliance, ensure the supply cord is not trapped or damaged

- **WARNING:** Do not locate multiple portable socket-outlets or portable power supplies at therear of the appliance.

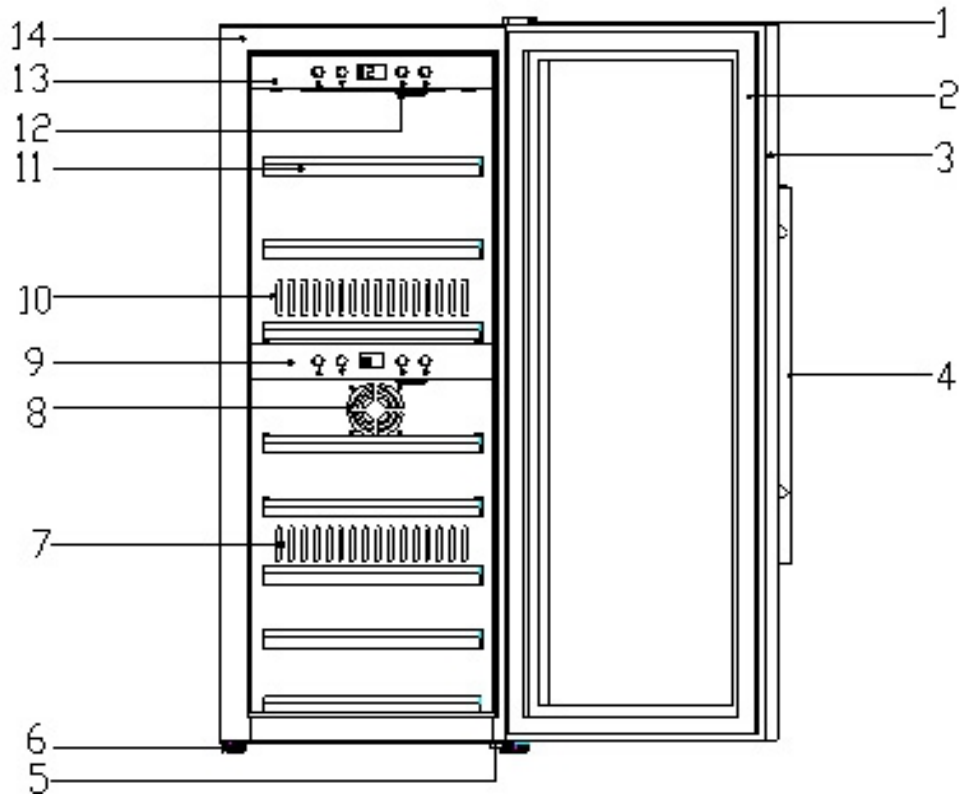
- Do not store explosive substances such as aerosol cans with a flammable propellant in this appliance.

- The plug must be accessible after the product is installed.
- DANGER: Risk of child entrapment. Before you throw away your old refrigerator or freezer:
 - * Take off the doors.
 - * Leave the shelves in place so that children may not easily climb inside.

This appliance is intended to be used in household and similar applications such as

- staff kitchen areas in shops, offices and other working environments;
- farm houses and by clients in hotels, motels and other residential type environments;
- bed and breakfast type environments;
- catering and similar non-retail applications.
- When the machine is installed, the left and right sides and back must have more than 5cm of the heat dissipation space, (Freestanding only) the machine can not store flammable items.
- During handling, be careful, do not carry from the front and rear of the box, should be tilted from the left and right sides, can not lie down to move the box.

1. Structure



(1)Up Hinge Cover

(2)Door Sealing

(3)Door Frame

(4)Door Handle

(5)Down Hinge

(6)Foot

(7)Hot Air Outlet

(8) Air inlet

(9)Control Panel(Down)

(10)Cold Air Outlet

(11)Rack

(12)Sensor Cap

(13)Control Panel(Up)

(14)Casing

2. Important Safety Instructions

Basic precautions when using,

- (1) Only use your wine cabinet for intended purposes, as described in this guide.
- (2) Never unplug the wine cabinet by pulling out the power cord, grip the plug firmly and pull straight out to remove from wall socket.
- (3) Immediately repair or replace any worn or damaged cord, never use a cord that is split or which shows signs of wear along its length or on its ends
- (4) This appliance is not intended for use by persons(including children)with reduced physical, sensory or mental capabilities, or lack of experience and knowledge, unless they have been given supervision or instruction concerning use of the appliance by a person responsible for their safety
- (5) Children should be supervised to ensure that they do not play with the appliance, do not allow children to climb on, sit on or stand on the wine cabinet, nor hang from its shelves. They could damage the cabinet.
- (6) Do not use an extension cord, do not operate this device if its power cable or plug is damaged, if it does not work properly or if it is damaged or has been dropped, If the power cable is damaged. If the power cable is damaged, it will need to

be replaced by the manufacturer or his service agency or a similar qualified person, to avoid any dangers.

(7) Do not place other appliance inside the cabinet.

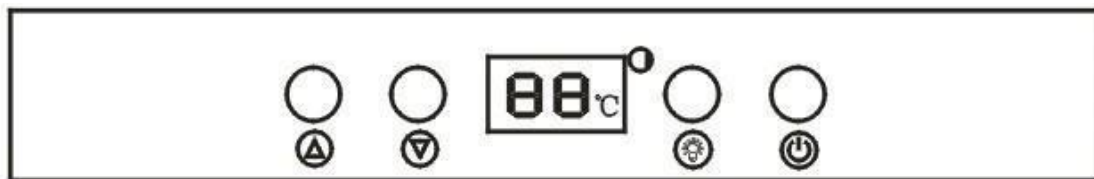
3. Wine cabinet Installation:

- (1) When you receive the cabinet, make sure when you unpack it there is no flaws in its external appearance (from shocks, deformation, etc.)
- (2) Open the door and check all interior fittings and supplied items if are all complete (shelves, instruction, control panel, etc.) Please install it according to the following points if the shelves or shelf brackets fall off during transit.
- (3) After checking, if no problem, then, pls carry to the final place, which should be care as follows:
 - A. Leaving space of minimum 5cm between your wine cabinet and left & right wall; at least 8cm between back of cabinet and the wall.
 - B. Position the wine cabinet on a flat level surface, if not, adjust the feet of wine cabinet to keep level.
- (4) Away from sources of heat and high humidity areas (laundry room and bathroom, etc).
- (5) Do not tilt it at an angle of more than 45° when move the cabinet.
Allow a minimum 10-minute interval between transit and re-starting.
- (6) Make sure the ventilation is free if you wish to install your cabinet into a worktable, otherwise, it will reduce the effect of usage.

(7) Please check the plug and cable before you connect the power, then, make sure correct voltage of 220V-240V/50Hz.

4. Temperature setting

4.1 The temperature setting of dual temperature wine cabinet



4.1.2 Temperature setting range for single temperature upright cabinet is 5 c to 20 c the item is equipped with a heater system that will work if the external ambient temperature will go lower than the setting point requested from customer. Customer can set the inner temperature between the above Temp. range for single and double temperature model, can be a difference of some degrees from the top to the bottom of the cabinet in terms of air temperature due to the working ways of compressor cycle, but the products temp. will be stable to the setting point selected.

Note : double temp version have two thermostat where customer can select two different inner temperature according to the kind of wine stored.

When Customer choose a setting point on the upper coldest cabinet sector,

on the bottom warmest sector inner temp can be set only by choosing an upper setting point.





Example : if 10 C is sets on the coldest sector the warmest sector setting point can start to be selected only from 10 C degrees or above.

4.2.3 How to change setting point temperature

Pushing the bottom or the upper arrow one time and the display will show you the current setting point , push and release more time the arrow and the setting temperature will change according. In order to records the new setting temperature point do not operate or touch the display for 20 seconds.

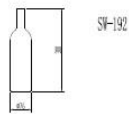
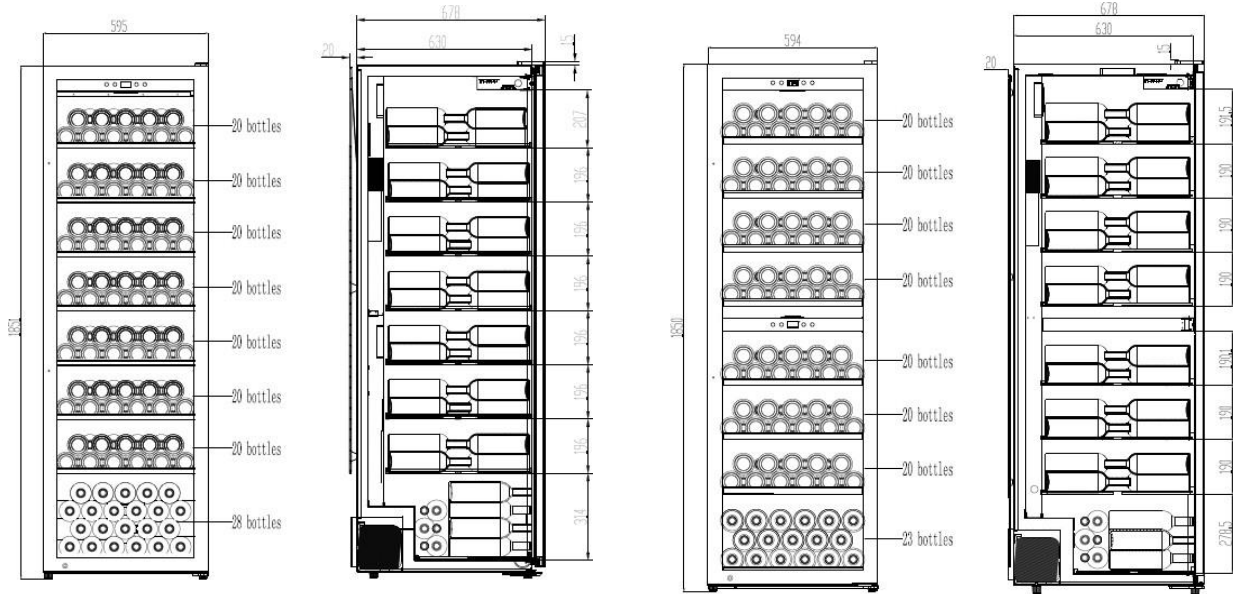
4.2.4. Control panel for single zone and double zone Standby button, by pushing the icon the compressor will be switch on and off.

The displayed icon will blinking once the cooling its off and permanent on when cooling cycle will be activated.

-  ON/OFF of the whole system
-  ON/OFF of inside cabinet LED light
-  Temperature UP setting
-  Temperature DOWN setting

5. Loading and storage of wine bottle:

5.1 Bottle loading method:



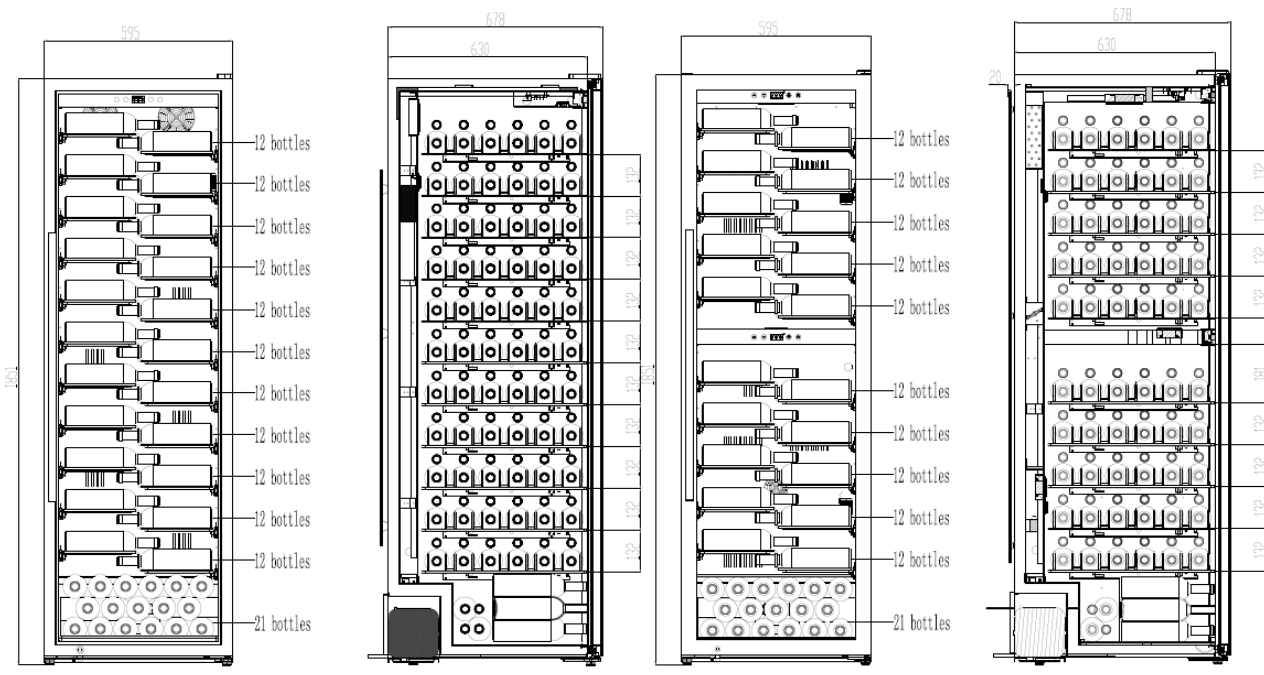
CCAV168

-



CCAV163BZ

- Wooden shelf capacity: 11 bottles / shelf
- Bottom shelf capacity: 12 bottles / shelf
- Maintain a minimum 20mm between bottle and back plate
- Ensure storage bottle Dia.78mm&hight 300mm,otherwise,less bottle loading



CCAV168

-

CCAV163BZ

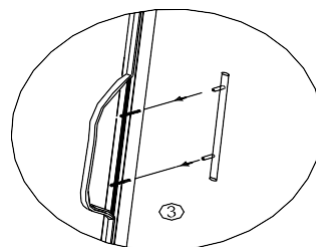
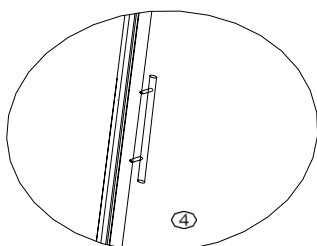
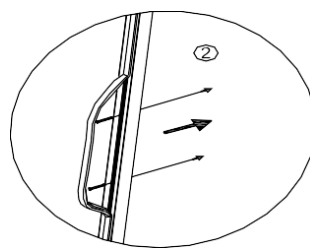
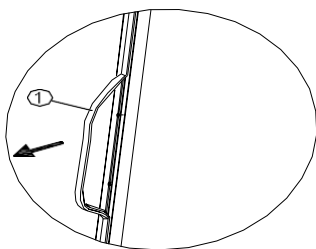
- Metal shelf capacity:12 bottles / shelf
- Bottom shelf capacity: 12 bottles / shelf
- Maintain a minimum 20mm between bottle and back plate
- Ensure storage bottle Dia.78mm&hight 300mm,otherwise,less bottle loading

5.2 Ensure bottle and shelf safety, check the following tips:

- A. Spread your bottles out as evenly as possible over the shelves, so weight is not concentrated in one point; and make sure your bottles will not touch the back of the cabinet.
- B. Make sure bottles are not all grouped together at the top or bottom of the cabinet
- C. Following loading instructions provided in section 5.1, according to the type of storage fixtures with which your cabinet is equipped, and never stack bottles on a sliding shelf.
- D. Due to humidity will be fluctuated based on room humidity and temp. Please make special film to pack before storage inside cabinet, which will ensure the label of bottle could not be damaged.

6. Installing your handle

Install the handle according to the following four steps:



1. Move door seal out in the place of installing the handle
2. Take screws from manual bag & Put it in the appointed place
3. Fasten door handle by screwdriver
4. Refit the door seal to the relevant position

7. Shelf changing

Once shelf need to change, please check which kind of slider, which used, two slider as follow firstly:



(A)



(B)

If slider is (A), then, only take out shelf and change another new shelf, it will be ok. But please make sure the wood hole need to match the slider hook.

If slider is (B), then, you need operate normal as below step:

1. Unscrew the wood shelf from slider
2. Take out the old wood shelf and change new one
3. Screw the wood shelf again from shelf bottom as previous, then, it is ok.

8. Maintenance

In order to ensure best performance & long-last reliable working item, please follow the simple maintenance and cleaning operations as below:

- Make sure the power cord is unplugged before cleaning the back of your cabinet, or before moving it.
- Clean the inside of your cabinet thoroughly once a year, after unplugging and unloading it(uses water and a mild cleaning item, then rinse carefully).
- To assure that your wine cabinet provides long-lasting reliable performance, you should check it regularly and inform your dealer if anything unusual is found.

9. Technical Data:

Model	Wine Cooler
Climate Class	Please refer to the information indicated on the product. You will find the information on the rating label on the back of the unit as well as inside the cooling compartment. The circuit diagram is displayed on the back of the unit as well as inside the cooling compartment
Refrigerant Gas	
Refrigerant Charge	
Temperature Range (°C)	
Input Power	
Rated Frequency	
Rated Voltage	
Internal volume	
Net Weight	
Gross Weight	
Foaming Agent	
External Dimension (mm)	



CAUTION: RISK OF FIRE AND EXPLOSION WITH FLAMMABLE REFRIGERANT R600a/R290.



10. Trouble shooting

Problem	Solution
No working	Plug or not
	Fuse break
	No power
Cooling problem	Heat source near the item
	Ventilation not well
	Door close not well or door open too long
	Door sealing problem or deformation
	Bottles loading too much in same shelf
	Air inlet or outlet block
	Control setting problem
Noisy	Ventilation space in the right & left casing not enough
	Wine cabinet placed not flat
	Item touch the wall
	Some parts loose or taken off

If still have problem after checking above, please try to contact service center or dealer.

Note: normal operation for following phenomenon:

A) Compressor no start:

Compressor will not start I room temperature is lower than desired temperature, but item is still working with heater inside till desired temperature achieved.

B) Compressor re-start

Compressor will stop working when cooling system in the cabinet reaches presetting temperature, and re-start working until the desired temperature is achieved. Allow a minimum 5 minute interval before re-starting.

C) Dew on the surface of cabinet:

The surface of wine cabinet especially the glass door appears some frost if item in a damp room. This is due to the moisture in the air coming into contact with the cabinet. Please wipe it away dry cloth.

D) Normal operating sounds you may hear

Boiling water, gurgling sounds or slight vibrations that the result of the refrigerant circulating through the cooling coils.

Popping or crackling noises due to the auto defrost cycle melting frost build-up.

Liquid sound:

- (1) The sound of compressor when starts or stops working
- (2) The flowing sound of refrigerant in the refrigeration system
- (3) The evaporating sound of refrigerant in the evaporator

E) Condensation formed inside the cabinet

Under the environment with high level of humidity or the door of wine cabinet has been left open for a long period or opened frequently ,there are much condensation, and pls wipe off the water from the door and walls and leave the door closed as long as possible.

F) Heat function on bottom zone:

Heat function o bottom zone will automatically be on as below reason.

- a) When setting temp. is upper than room temp.
- b) When inside bottom temperature is lower than setting temp.

G) Indicator light:

When temperature inside cabinet is out of range of setting temperature, both up and down indicator light will be on. Once temperature reaches setting temperature, then, this light will be off automatically.